

# NEW JERSEY

## WORKING FAMILIES PARTY

Thank you  
for traveling the



**WORKING FAMILIES PARKWAY**

**PRIMARIES VOTER GUIDE  
2026 EDITION**

# 2026 NJ WFP ENDORSED CANDIDATES



**EXIT**

**Analilia Mejia**

**NJ-11**  
**CONGRESS**



**EXIT**

**LaMonica McIver**

**NJ-10**  
**CONGRESS**



**EXIT**

**Sue Altman**

**NJ-12**  
**CONGRESS**



**POLLS ARE OPEN FROM 6AM-8PM**

**FIND YOUR VOTING LOCATION BY VISITING: [VOTE.NJ.GOV](https://vote.nj.gov)**

# 2026 NJ WFP ENDORSED CANDIDATES



**EXIT**

**Bill O'Dea**

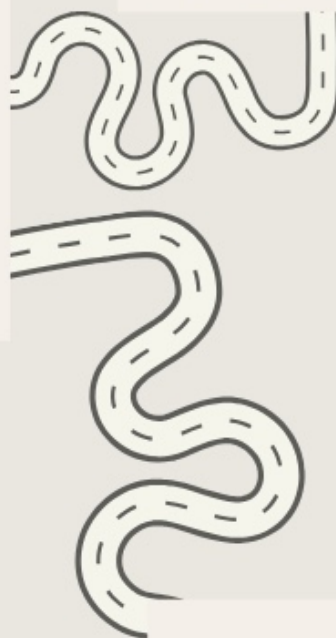
**HUDSON COUTNY  
COMMISSIONER - D2**



**EXIT**

**Ras Baraka**

**NEWARK  
MAYOR**



**EXIT**

**Pam Johnson**

**HUDSON COUTNY  
COMMISSIONER - D3**



**POLLS ARE OPEN FROM 6AM-8PM**

**FIND YOUR VOTING LOCATION BY VISITING: [VOTE.NJ.GOV](https://vote.nj.gov)**

# 2026 NJ WFP ENDORSED CANDIDATES



**EXIT**

**Alex Valdez**

**HUDSON COUTNY  
COMMISSIONER - D9**



**EXIT**

**Ron Bautista**

**HUDSON COUTNY  
COMMISSIONER - D5**



**EXIT**

**Ali Aljarrah**

**HUDSON COUTNY  
COMMISSIONER - D2**



**POLLS ARE OPEN FROM 6AM-8PM**

**FIND YOUR VOTING LOCATION BY VISITING: [VOTE.NJ.GOV](https://vote.nj.gov)**

# 2026 NJ WFP ENDORSED CANDIDATES



**EXIT**

**Shantell Cherry**

**PISCATAWAY  
CITY COUNCIL**



**EXIT**

**Elizabeth Aumack**

**PISCATAWAY  
CITY COUNCIL**



**EXIT**

**Viola Stone**

**PISCATAWAY  
CITY COUNCIL**



**EXIT**

**Rashaad Couloote**

**PISCATAWAY  
CITY COUNCIL**

**POLLS ARE OPEN FROM 6AM-8PM  
FIND YOUR VOTING LOCATION BY VISITING: [VOTE.NJ.GOV](https://vote.nj.gov)**

**FEDERAL**

CONGRESSIONAL DISTRICT 10	LAMONICA MCIVER
CONGRESSIONAL DISTRICT 11	ANALILIA MEJIA
CONGRESSIONAL DISTRICT 12	SUE ALTMAN

**COUNTY**

HUDSON COUNTY COMMISSIONER DISTRICT 2	BILL O'DEA
HUDSON COUNTY COMMISSIONER DISTRICT 3	PAM JOHNSON
HUDSON COUNTY COMMISSIONER DISTRICT 5	RON BAUTISTA
HUDSON COUNTY COMMISSIONER DISTRICT 9	ALEX VALDEZ
PASSAIC COUNTY COMMISSIONER	ALI ALJARRAH

**MUNICIPAL**

NEWARK MAYOR	RAS BARAKA
PISCATAWAY CITY COUNCIL	
• WARD 1	SHANTELL CHERRY
• WARD 2	ELIZABETH AUMACK
• WARD 3	VIOLA STONE
• WARD 4	RASHAAD COULOOTE

# ELECTION DAY

DATE & TIME 

**TUESDAY, JUNE 2ND**

**POLLS ARE OPEN FROM 6AM-8PM**

REGISTER TO VOTE 

REGISTRATION IS AVAILABLE ONLINE AT **VOTE.NJ.GOV** AND IN PERSON AT YOUR LOCAL REGISTRAR OF VOTERS. FINAL DAY TO REGISTER IS **MAY 12<sup>TH</sup>**

FIND YOUR POLLING LOCATION 

VERIFY YOUR ELECTION DAY VOTING LOCATION BY VISITING:  
**VOTE.NJ.ORG**

**NEW JERSEY  
WORKING FAMILIES PARTY**

# NJ Early Voting



## Hours

**Tuesday, May 26th - 10am-8pm**

**Wednesday, May 27<sup>th</sup> - 10am-6pm**

**Thursday, May 28<sup>th</sup> - 10am-8pm**

**Friday, May 29<sup>th</sup> - 10am-8pm**

**Saturday, May 30<sup>th</sup> - 10am-8pm**

**Sunday, May 31<sup>st</sup> - 10am - 6pm**



# VOTE BY MAIL



## NEED A MAIL-IN BALLOT?

YOU CAN REQUEST A MAIL-IN BALLOT APPLICATION IN PERSON AT YOUR COUNTY CLERK'S OFFICE OR ONLINE AT [VOTE.NJ.GOV](http://VOTE.NJ.GOV)

## 3 WAYS TO VOTE BY MAIL

**Mail:** It must be postmarked on or before 8:00 PM Election Day and be received by your county's Board of Elections on or before 6 days after Election Day

**Secure Ballot Drop Box:** Place your vote-by-mail ballot in one of your county's secure ballot drop boxes by 8:00 PM on Election Day. Drop box locations can be found at [VOTE.NJ.GOV](http://VOTE.NJ.GOV).

**Board of Elections Office:** Deliver it in person to your county's Board of Elections Office by 8:00 p.m. on Election Day.

Your Vote-By-Mail ballot **CANNOT** be returned to your In-Person Early Voting Poll Location or your Election Day Poll Location.

VOTERS CAN TRACK THEIR MAIL-IN BALLOT THROUGH THE TRACK MY BALLOT PORTAL AT [TRACKMYBALLOT.NJ.GOV](http://TRACKMYBALLOT.NJ.GOV)